

# KING VALVES INDIA

## COMPANY PROFILE

**Mfg. & Exporter of Industrial Valves & Automation**



[www.kingvalvesindia.com](http://www.kingvalvesindia.com)



<b>Sr. No.</b>	<b>Perticulars</b>	<b>Page No.</b>
<b>1</b>	<b>LOCATION</b>	
<b>2</b>	<b>CORPORATE OVERVIEW</b>	
<b>3</b>	<b>ORGANISATION CHART</b>	
<b>4</b>	<b>QUALITY POLICY</b>	
<b>5</b>	<b>FOUNDRY FACILITIES</b>	
<b>6</b>	<b>MANUFACTURING PROCESS</b>	
<b>7</b>	<b>LIST OF MACHINERY</b>	
<b>8</b>	<b>LIST OF INSTRUMENTS</b>	
<b>9</b>	<b>TESTING FACILITIES</b>	
<b>10</b>	<b>ISO 9001-2015 CERTIFICATE</b>	
<b>11</b>	<b>SUPPLIER RELATION</b>	
<b>12</b>	<b>PERFORMANCE CERTIFICATE</b>	
<b>13</b>	<b>Presence across industries</b>	
<b>14</b>	<b>P.O. COPIES OF VALUED CUSTOMERS</b>	

**Company Name:** KING VALVES PRODUCTS / KING VALVES INDIA

**Address:** Plot No. 189/1/A, MITHA GODOWN, NR.ILABEN FARM, B/H.AARVEE DENIM, NAROL – SARKHEJ ROAD, AHMEDABAD - 382405

**Mobile** - + 91-9824778623 / 9998379656 / 9879480572

**Email** : faizar@kingvalvesindia.com

**Website:** [www.kingvalvesindia.com](http://www.kingvalvesindia.com)

**Year Of Establishment** : Incorporated in 2000

**MSME Certificate No.:-** GJ01A0124893

**Commenced independent operations as KING VALVES INDIA** : in 2016

**Total Area Of Works (Including Foundry area):** 65000 sq. ft.

**Employees & Workers** : 40 + Daily labours

**IEC No.** : ANLPD5406

**GSTIN No.** : 24ANLPD5406D1ZI

**PAN No.** : ANLPD5406D

**ISO Certificate No.** : 18DQEV67

**Our Bankers** : BANK OF MAHARASHTRA / BANK OF INDIA

❑ **VISION:**

To be globally recognized in our forte valve markets for engineering excellence, exceptional customer service and the best performing products.

❑ **COMMITMENT:**

We provide a complete responsive and resourceful obligation. We not only perform to deliver agreed commitments with speed and agility, but also provide prompt responses and acceptance of constructive criticisms. Carrying out the role and responsibility with positive attitude and unwavering commitment is jakflow's accentuation on the sense of able duty and best services.

❑ **Values:**

**Integrity:**

Integrity guides our conduct. We must conduct our business fairly, with honesty and transparency.

**Innovation:**

We must continuously strive to improve our products and services with a view to lead the market place through value creation.

**Respect for humanity:**

We must respect everyone, from customers and clients to fellow employees and partners with whom we interact and strive to create positive difference.

**Teamwork :**

We must work cohesively with our colleagues across the group and with our customers and partners around the world, building strong relationships based on tolerance, understanding and mutual cooperation.

## WHY IT IS IMPORTANT TO INVEST IN SUCH INITIATIVES ? HOW WE AND OUR CLIENT WILL GET BENEFIT FROM IT IN THE LONG RUN?

- ❑ Strong evidence of our commitment to quality
- ❑ Clear indication of our capabilities
- ❑ Assurance of consistency in quality of products & services with timely delivery
- ❑ Being internationally recognized, our products have gained world-wide acceptance
- ❑ Motivates our employees and ensures their involvement in improvement initiatives
- ❑ Provides a stepping stone to TQM.



### *Quality Policy*

*"King Valves India's" is one of the leading manufacturers of Industrial Valves like, Ball Valve, Gate Valve, Globe valve, Butterfly valve, Swing check valve, Wafer Check Valve, Dual Plate Check Valve, Knife Edge Gate Valve Strainer, Flanges and Fitting etc. "King Valves India" has been servicing the Oil Industries, Petro Chemical Industries, Pharmaceuticals Unit, Power Plants, Refineries, Paper Industries, Cement Plants, and Thermal Power Plants with product range in size 15 mm to 600 mm and pressure rating up to 2500 class.*

*King valves India's designs; systems, processes, products and organizational structure are geared towards ensuring that every product to the customers passes through our stringent systemic quality measures. This quality policy believes in stretching innovative thinking to its limits while exhibiting a no-compromise attitude towards quality.*

I.A.DHATTIWALA  
Proprietor

## “KING” ISO CERTIFICATE



- ✓ **ISO 9001:2015** In Accordance With IAF Procedure.
- ✓ ISO 9001:2015 specifies requirements for a quality management system where an organization needs to demonstrate its ability to consistently provide product that meets customer and applicable statutory and regulatory requirements.
- ✓ We ensure that all our processes are regularly audited and thereby compliant to the ISO guidelines.

## "KING" MSME CERTIFICATE

(NOT FOR LEGAL USE)

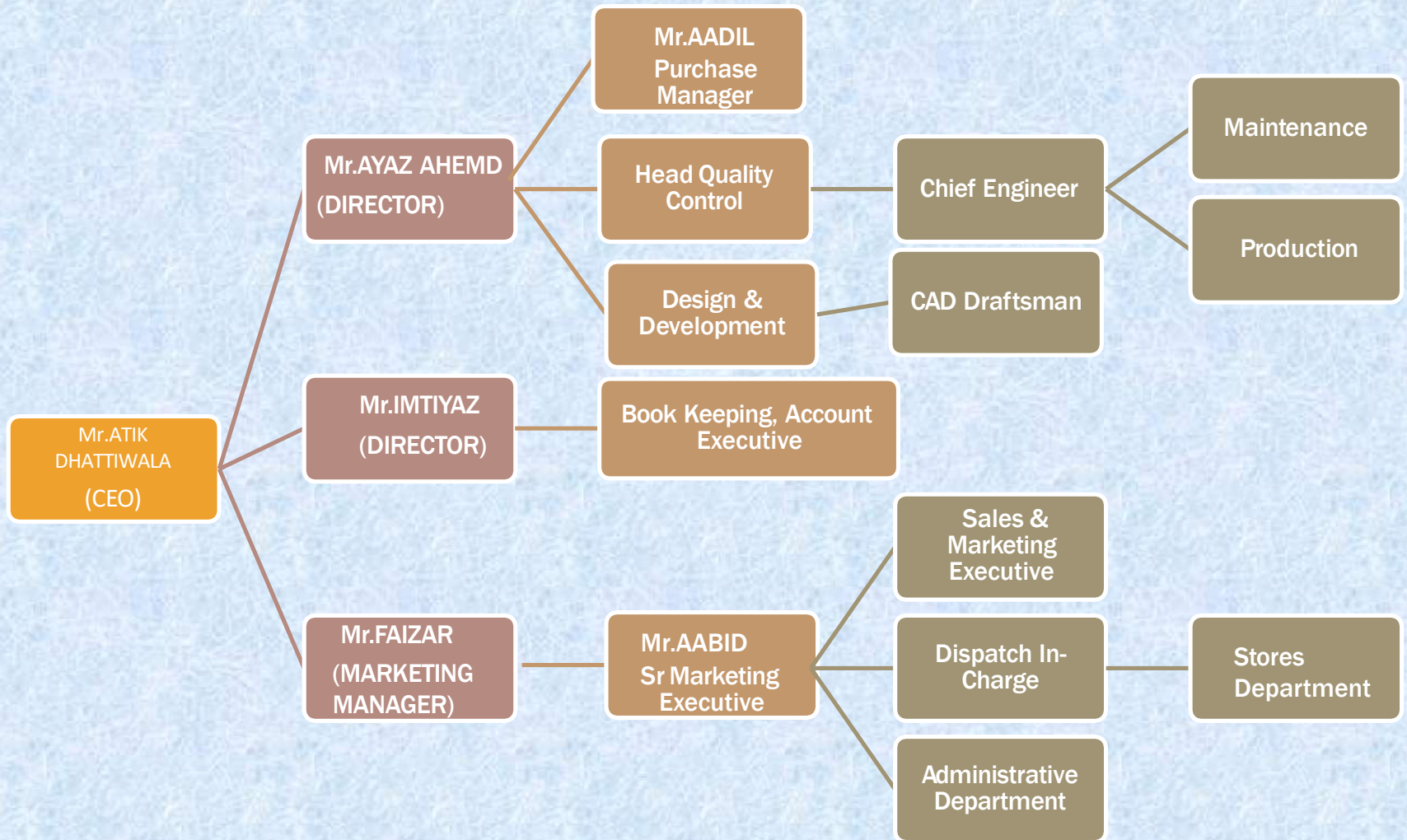
Trade Mark Image : (1)



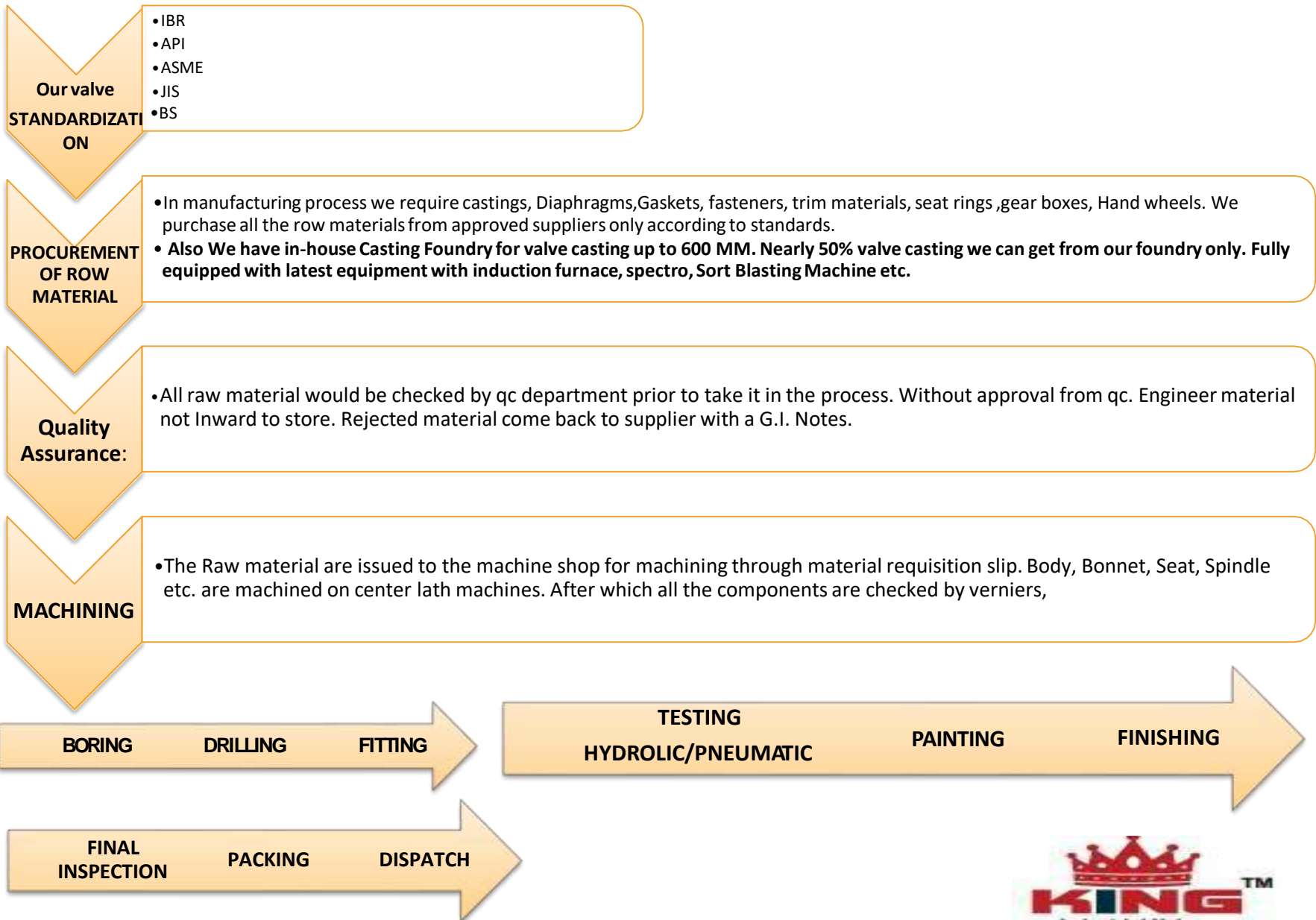
WARNING/DISCLAIMER: THE DATA OF TRADE MARKS REGISTRY IS UNDER THE PROCESS OF DIGITISATION, IF ANY DISCREPANCY IS OBSERVED IN THE DATA PLEASE CONTACT OR SUBMIT AT APPROPRIATE TRADE MARKS REGISTRY

[illegible]

Our Management is Having the right blend of youth and experience, Jakflow led by a highly dynamic and futuristic management which is always on the hunt for new opportunities to explore, and at the same time providing the right kind of environment for its team members to innovate and grow.



# "KING" Standard Process to manufacturing the Valves.





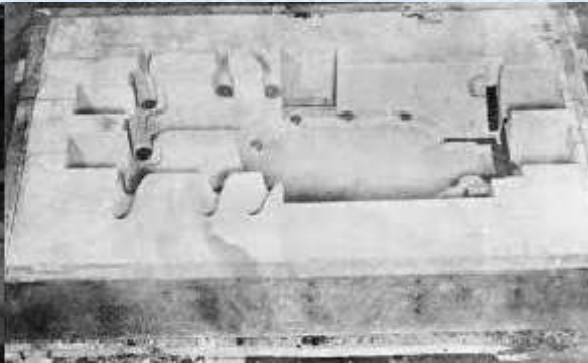
## **FACILITY OF SAND CASTING INDUCTION FURNACE**

An Induction based Melting Furnace operating on medium frequency suitable specially for all types of steels. It Consists of 2 cells (200 & 500 Kg) and a power panel of 100 Kw.

In our Foundry we produce as per client request all special grades like LCB, LCC, SS316L, Duplex 4A & 5A, Inconel 625, Monel, Alloy 20-CN7M, Alu. Bronze-C95800 etc...



**Scrape of metal liquidation**



**Pattern Core in two parts**



**Our pattern for 8" 300 GTV**



**Our Induction Furnace for Melting scrap  
CAPACITY OF 200K.G & 500K.G..**



**Metal in form of liquid after great  
heating temperature to mould in the  
shape & prepare for pouring process.**





**Our Sort Blasting Machine to Clean the Casting.**



**HEAT TREATMENT FURNACE**



**Valve Casting  
Ready for  
Machining**



# FACTORY MACHINING,DRILLING,TESTING FACILITY



PRODUCTION AREA



DRILLING AREA



TESTING AREA



PAINTING AREA



DISPATCH AREA



# FACTORY MACHINING, DRILLING, TESTING FACILITY

## LATHE, PANTOGRAPH, HACKSHAW & LASER



LATHE MACHINE



PANTOGRAPH MACHINE



HACKSHAW MACHINE



LASER ENGRAVING



CNC MACHINE



WELDING AREA

# QUALITY CONTROL & RESEARCH DEVELOPMENT



Valves need to conform to certain leakage standards and various other checks are also carried out. Valve testing and inspections should ideally be done every 12 months or so to ensure they are in the best working condition. However, this will of course vary depending on the age, condition, and type of valve in question.



KING VALVES INDIA firmly believes in an innovation-led approach towards attaining sustainable and long term leadership status in our chosen sphere of work. Working towards this vision, we have established a dedicated in-house Research & Development (R&D) Center with the aim of securing our future. One of the first (and as yet, the only) company in our industry to do so, our R&D Center is recognised by the Government of India, Ministry of Science & Technology as an “In-House R&D Center” and the granted Certificate of Recognition is available for review if required.





## CI, CS, SS, GUNMETAL (1PC, 2PC & 3PC BALL VALVE FLANGED SCREWED)



Applications	: Petroleum, Power Generation, Water, Chemicals, Fertilizers & Natural Gas, Fuel Oil control,
Operators	: Lever Operated , Gear Operated, Electrical Actuator, Pneumatic Actuator
Special Features	: Fire safe, Jacketed, Extended Stem, Wafer type ball valve.
Temperature range	: -20 to 180 C
Pressure Rating	: 150#, 300# , 600# , 800# , 900# , 1500#, 2500#
End to End Dimen.	: API 6D / ANSI B 16.10
Inspection Std.	: API 598/BS 6755
Ends	: Flanged End, Screwed Ends, Butt-weld, Socket Weld.
Size Range	: Up to 20"





**DOUBLE OFFSET - DOUBLE  
FLNGE BFV AS PER AWWAC 504  
/IS: 13095**



**CENTRIC DISC WAFER  
TYPE BFV LEVER/ GEAR  
OP., BS:5155 / API 609**



**CENTRIC DISC RUBBER  
LINED DOUBLE FLANGE BFV**



**TRIPLE OFFSET BFV**



**WAFER FULL LUGGED  
BFV GEAR OP.**



**PFA LINED BUTTERFLY VALVE**



**ALUMINIUM  
BRONZE BFV GO**



**PNEUMATIC ACTUATOR OP. BUTTERFLY VALVE  
WITH SOV, LIMIT SWITCH, FR & MANUAL OVER  
RIDE**



Applications	: Water, Chemicals, Pharma , Fuel Oil, Gases, Desalination Plants, Sea wage Systems, Pumping Stations
Operators	: Lever Operated , Gear Operated, Electrical Actuator, Pneumatic Actuator
Temperature range	: -20 to 600 C
Pressure Rating	: 150#, 300# , 600#
Seating Options	: NBR, EPDM, VITON, PTFE, METAL SEAT
Inspection Std.	: AP I 598/BS 6755
Ends	: Flanged End, Wafer End, Lug type.
Size Range	: Up to 104"
Standard	: API 609, AWWA C 504, BS 5155, BS 6755, IS :13095

[www.kingvalvesindia.com](http://www.kingvalvesindia.com)





**WCB GTV RISING  
SPINDLE FE 150#**



**Non – Rising Spindle  
GATE VALVE**



## **KNIFE EDGE GATE VALVE**



**FORGE CARBON STEEL/ FORGE STAINLESS  
STEEL 800#/ 1500#/ 2500# GATE VALVE**



**SS 316 IC GATE  
VALVE FE**



[www.kingvalvesindia.com](http://www.kingvalvesindia.com)

**Gate Valve Working Principle:** A Gate Valve, is a valve that opens by lifting a round or rectangular gate/wedge out of the path of the fluid .

**Design Features :** Designed for high pressure and high temperature applications, for a wide range of fluids except slurries and viscous fluids. These valves are generally used in the wide open or closed position, are not recommended for throttling service because throttling causes disc chattering and vibration which is likely to erode the seating surface and cause leakage.

**Applications :** Petroleum, Power Generation, Water, Chemicals, Fertilizers & Natural Gas, Steel Industry, Feed Water, steam, Isolation Drain, Shut Off Valves

**Operators :** Hand Wheel , Chain Pully , Gear Operated, Electrical Actuator, Pneumatic cylinder.

**Special Features :** Pres sure Sealed Joints /Cryogenic Service to BS 6364/Nace Specifications (MR- 01-7 5), Position Indicator, Drain & Bypass arrangement.

**Temperature range :** -20 to 660 C

**Pressure Rating :** 150#, 300# , 600# , 800# , 900# , 1500#, 2500#

**End to End Dimen. :** ANSI B 16.10/ Din 3230/

**Inspection Std. :** AP I 598/BS 6755

**Ends :** Flanged End, Socket weld, Butt-weld,.

**Size Range :** Up to 36"

**Standard :** API 6D, BS 5351



**ND 40 GLOBE VALVE**



**150# GLOBE VALVE**

## OUR PRODUCT RANGE IN GLOBE VALVES

- BOLTED BONNET GLOBE VALVE
- THROTTLE GLOBE VALVE
- ND 40 / S PATTERN GLOBE VALVE
- PRESSURE SEAL GLOBE VALVE
- FORGE STEEL GLOBE VALVE



**Forged Carbon Steel ASA-800#  
/ 1500# / 2500# Globe Valve SW**



**High Pressure Welded  
Bonnet Globe Valve  
2500# Gear Operated**



**Globe Valve Working Principle:** A Globe Valve, is a valve that opens by lifting a plug/ wedge out of the path of the fluid.

**Design Features :** Designed for high pressure and high temperature applications , for a wide range of fluids except slurries and viscous fluids. These valves are generally used in the wide open or closed position , are recommended for throttling service.

**Applications :** Petroleum, Power Generation, Water, Chemicals, Fertilizers & Natural Gas, Steel Industry, Feed Water, steam, Isolation Drain, Shut Off Valves

**Operators :** Hand Wheel , Chain Pully , Gear Operated, Electrical Actuator, Pneumatic cylinder.

**Position Indicator, Drain & Bypass arrangement.**

**Temperature range :** -20 to 660 C

**Pressure Rating :** 150#, 300# , 600# , 800# , 900# , 1500#, 2500#

**End to End Dimen. :** ANSI B 16.10/ Din 3230/

**Inspection Std. :** AP I 598/BS 6755

**Ends :** Flanged End, Socket weld,

**Butt-weld,.**

**Size Range :** Up to 42"

**Standard :** API 600, BS 1873



**API 6D CONDUIT  
GATE VALVE  
GEAR OPERATED**

**Special Features:** Pres sure Sealed Joints /Cryogenic Service to BS 6364/Nace Specifications (MR- 01-7 5),



**IC SWING CHECK VALVE FE**



**WCB SWING NRV**



**Forged NRV 800# / 1500# / 2500#  
SE / SW / FLANGE END**



**CS / SS Wafer Check Valve**



**Disc Check Valve**

## OUR PRODUCT RANGE IN CHECK VALVES

- SWING CHECK VALVE
- PISTON LIFT CHECK VALVE
- SINGLE DISC CHECK VALVE
- WAFER CHECK VALVE
- DUAL PLATE CHECK VALVE
- LINED CHECK VALVE
- FORGED STEEL CHECK VALVE



**WAFER TYPE / DOUBLE FLANGE  
DUAL PLATE CHECK VALVE IN  
CI/CS/SS**



**SS316 SWING TYPE CHECK  
VALVE FE 150#**

Applications	: Petroleum, Power Generation, Water, Chemicals, Fertilizers & Natural Gas, Fuel Oil control,
Operators	: Hand Wheel Operated , Gear Operated, Electrical Actuator, Pneumatic Cylinder
Special Features	: Fire safe, Jacketed, Counter Weight
Temperature range	: -20 to 400 C
Pressure Rating	: 150#, 300#, 600#, 800#, 900#, 1500#, 2500#
End to End Dimen.	: ANSI B 16.10/16.47
Inspection Std.	: API 598/BS 6755
Ends	: Flanged End, Screwed Ends, Butt-weld, Socket Weld.
Size Range	: Up to 36"
Standard	: API 602 /BS 5352/API 598

[www.kingvalvesindia.com](http://www.kingvalvesindia.com)





PP/UPVC/PVDF VALVES

## Special Catagories - Valves for Water, Thermic Fluid Line & Sulfuric Acid application

- STRAINER
- PP / PVDF / HDPE VALVES
- CONTROL VALVES
- PLUG VALVES
- LINED VALVES



Lined Plug  
Valve



Needle Valve

SQURE TYPE PULP  
VALVE



CI/CS/SS/FABRICATED YTYPE/ T TYPE/ BASKET  
STRAINER



[www.kingvalvesindia.com](http://www.kingvalvesindia.com)

Butterfly Valve



EXTENDED BUTTERFLY  
VALVE



KNIFE EDGE GATE  
VALVE CYLINDER OP.



### Register Office & Works:-

#### (FACTORY ADDRESS)

PLOT NO.189/1/A, VIJAY FARM, NR.AARVEE DENIM, NAROL – SARKHEJ ROAD, Ahmedabad-382340.

(M) : 9824778623 9879960433

E-mail : [faizar@kingvalvesindia.com](mailto:faizar@kingvalvesindia.com)

#### (OFFICE ADDRESS)

586, SHRIRAM CORPORATION, NAWA DARWAJA ROAD, ZAKARIYA MASJID, KALUPUR, AHMEDABAD - 380001

**Mobile** : +91 9879480572 / +91 9925518911

**Email** – [info@kingvalvesindia.com](mailto:info@kingvalvesindia.com)

**Website:** [www.kingvalvesindia.com](http://www.kingvalvesindia.com)

Follow us on :-



### OUR VALUED CLIENTS

